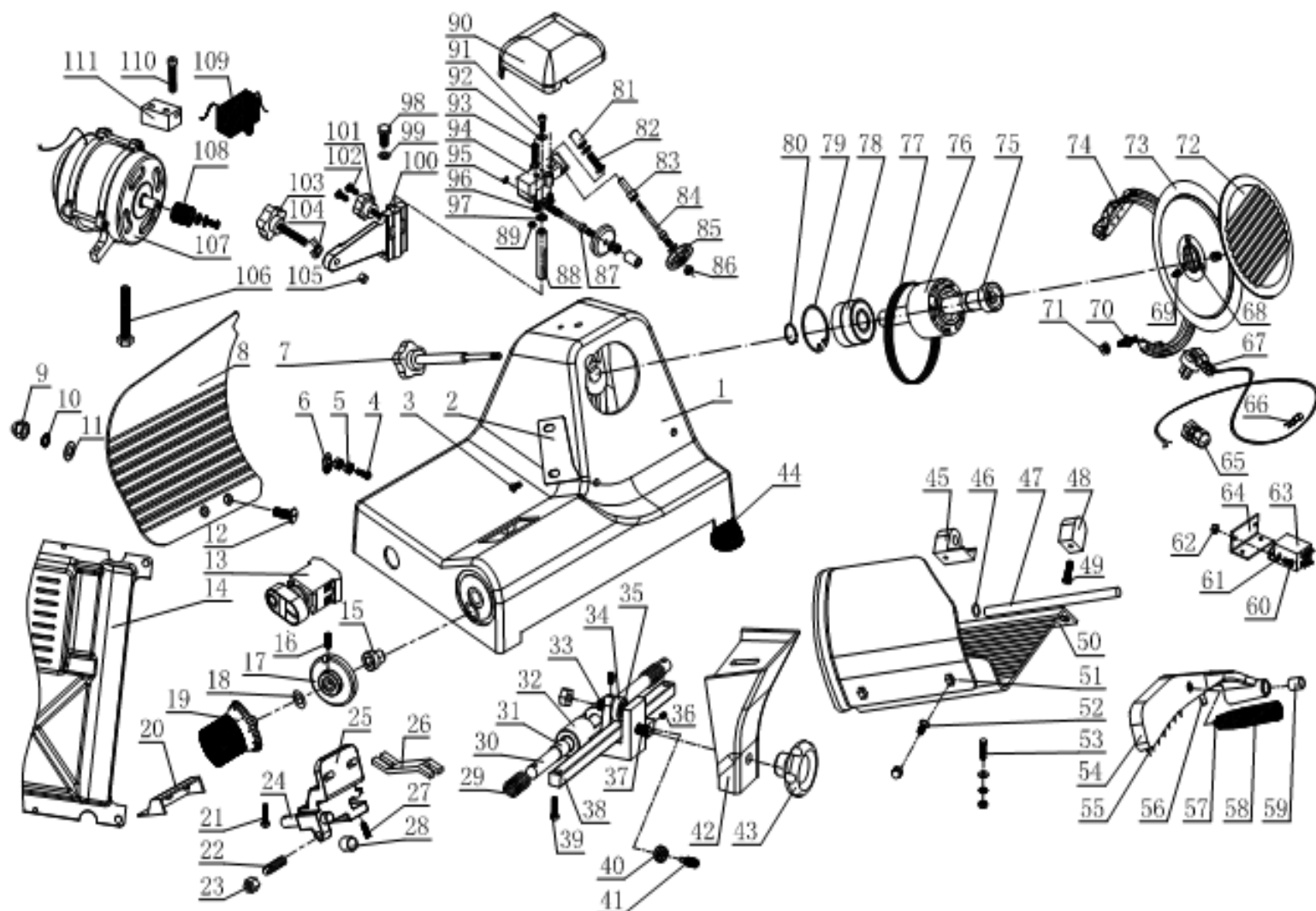


MS-220

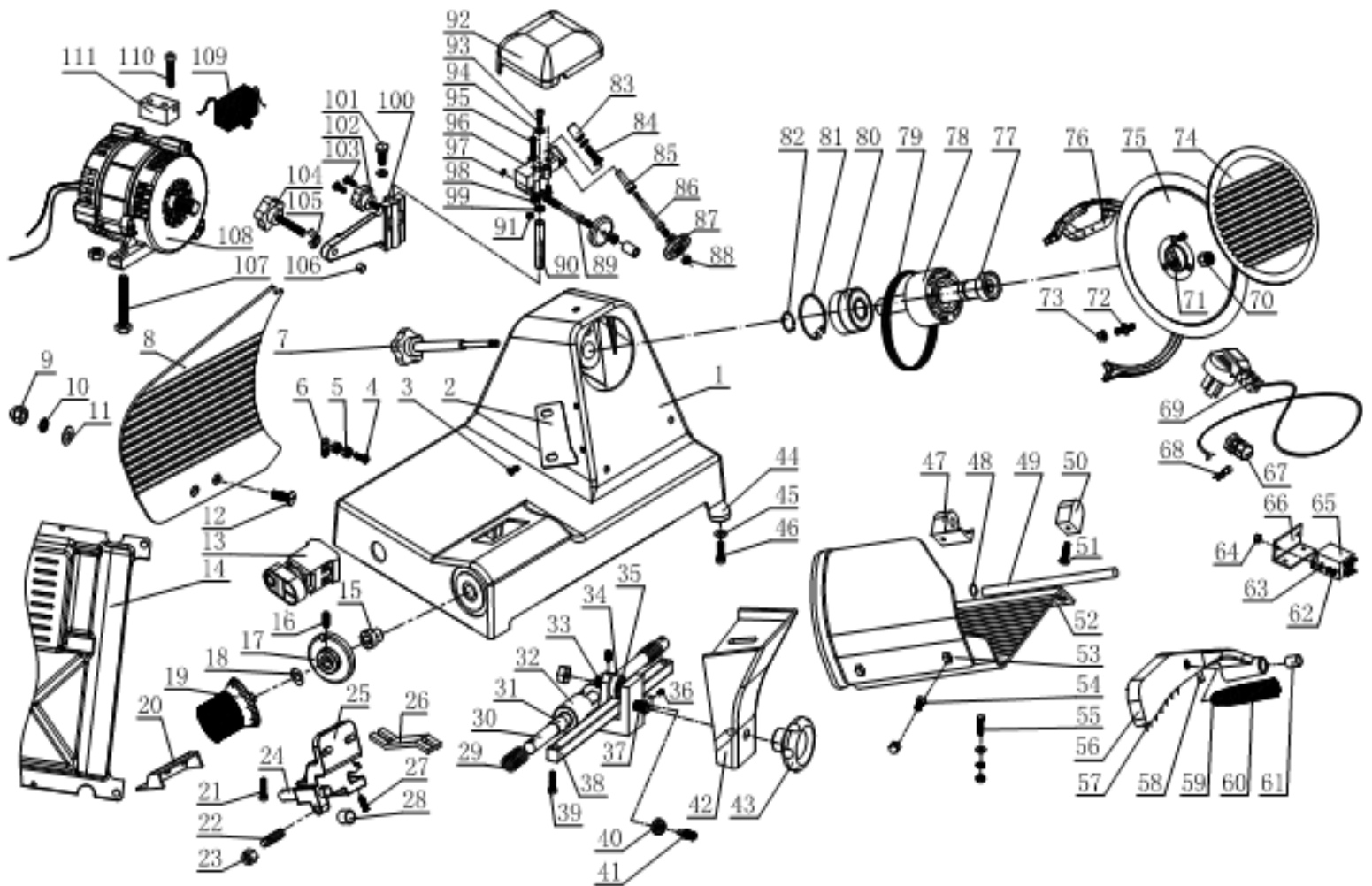


No.	Part Name	No.	Part Name
-----	-----------	-----	-----------

1	whole frame	57	hexagon socket set screws with cup point M10×8
2	scraping meat plate	58	handle
3	pan head screws with cross recessed M6×10	59	copper set 1015
4	copper pan head screws with cross recessed M5×16	60	pan head screws with cross recessed M4×10
5	copper nut M5	61	plain washers φ4
6	equipment sign	62	nut M4
7	fixing screw of the protecting cover of the slicing knife	63	relays JQX-13F
8	food stopping board	64	fix position of Relays
9	cap nut M6	65	fixing clamp of the wire
10	spring washers φ6	66	wiring terminal
11	plain washers φ6	67	wire and plug
12	slotted countersunk head screws M6×20	68	protect knife dish copper nut M6
13	switch	69	cross recessed countersunk head screw M5×16
14	plastic baseboard	70	special screw M5×30
15	axle set of the adjusting button	71	hexagon flange nuts M5
16	hexagon socket set screws with cup point M5×8	72	protecting cover of the slicing knife φ208.5
17	raised wheel	73	slicing knife φ250
18	vex-shape elastic cushion φ10	74	protecting ring of the slicing knife
19	adjusting button	75	main axle of the slicing knife
20	cover of the branch base	76	belt pulley of razor blade
21	hexagon socket cap screws M6×20	77	poly V-belt 370
22	adjusting screw of the protruding wheel	78	ball bearing 6004-2RS
23	nut M10	79	hole elastic φ42
24	axle of the sliding part φ12×90	80	axle elastic φ20
25	adjusting branch base	81	handle of the grinding wheel
26	adjusting sliding board	82	spring(innerdiameterφ6.5×0.6×20)
27	copper set screws M6×18	83	copper set of the grinding wheel base φ12
28	copper set 1215	84	wheel shaft B of φ 10 ×73
29	compression spring	85	grinding wheel φ40
30	guiding axle of the sliding part φ14×371	86	nut M4
31	copper set 1412	87	wheel shaft B of φ 10 ×68.5
32	sliding part	88	axle of the frame of the grinding parts φ12
33	axle of bearing φ10	89	nut M5
34	ball bearing 6000Z	90	protecting cover of the grinding wheel
35	axle elastic φ10	91	hexagon socket cap screws M5×16
36	hexagon socket set screws with cup point M4×6	92	plain washers φ5
37	hexagon socket set screws with flat point M10×35	93	pan head screws with cross recessed M5×30
38	square shaft	94	grinding wheel base
39	hexagon socket cap screws M6×25	95	axle elastic φ5
40	bearing 625Z	96	pan head screws with cross recessed M5×10
41	center-deviating axle of bearing M8×24	97	external teeth serrated lock washers M6
42	frame of the foot carrier	98	hexagonal screw M8×25
43	handle of the frame	99	spring washers φ8
44	plastic feet	100	frame of the grinding parts
45	small frame B	101	fixing handle of the frame of the grinding parts
46	O-shape rubber band M10-A	102	pan head screws with cross recessed M5×25
47	guiding stick of the food pressing board φ10×180	103	adjusting handle of the frame of the grinding parts
48	small frame A	104	wing nuts M8
49	cross recessed countersunk head screw M6×16	105	protecting plastic set
50	food carrier 195×192	106	hexagonal screw M6×50
51	protecting cover of the food carrier	107	motor 210W
52	slotted countersunk head screws M6×25	108	belt pulley of the blade motor φ24
53	hexagonal screw M6×30	109	electric capacitor 7μF
54	food pressing board	110	hexagon socket cap screws M6×25

55	stainless steel nail of $\varphi 3 \times 13$	111	connecting cushion of the motor
56	Nylon rod		

# MS-250

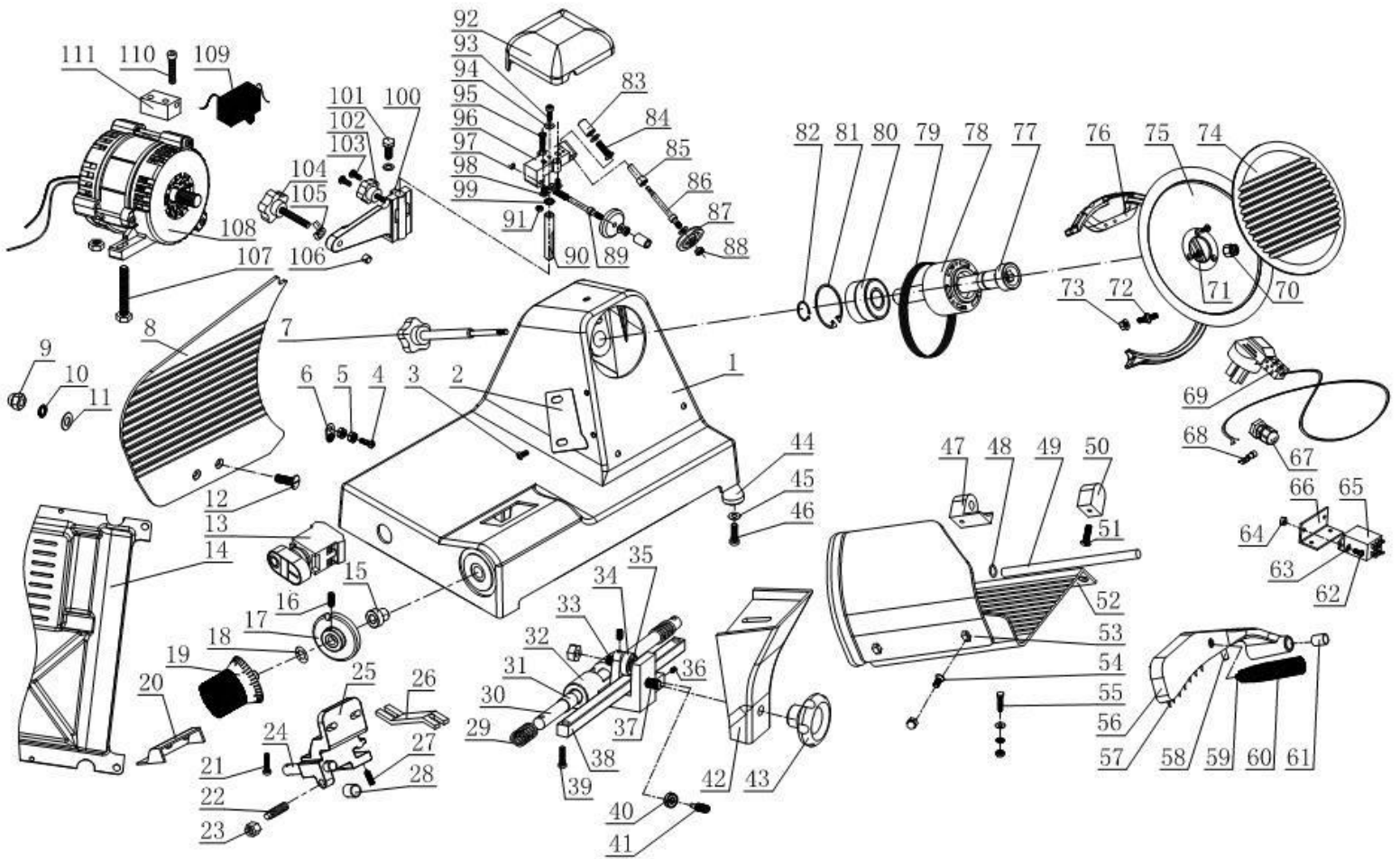


## MS-250

No.	Part Name	No.	Part Name
-----	-----------	-----	-----------

1	whole frame	57	stainless steel nail of $\phi 3 \times 13$
2	scraping meat plate	58	Nylon rod
3	pan head screws with cross recessed M6×10	59	hexagon socket set screws with cup point M10×
4	copper pan head screws with cross recessed M5×16	60	handle
5	copper nut M5	61	copper set 1015
6	equipment sign	62	pan head screws with cross recessed M4×10
7	fixing screw of the protecting cover of the slicing knife	63	plain washers $\phi 4$
8	food stopping board	64	nut M4
9	cap nut M6	65	relays JQX-13F
10	spring washers $\phi 6$	66	fix position of Relays
11	plain washers $\phi 6$	67	fixing clamp of the wire
12	slotted countersunk head screws M6×20	68	wiring terminal
13	switch	69	wire and plug
14	plastic baseboard	70	protect knife dish copper nut M6
15	axle set of the adjusting button	71	cross recessed countersunk head
16	hexagon socket set screws with cup point M5×8	72	screw M5×16
17	raised wheel	73	special screw M5×30
18	vex-shape elastic cushion $\phi 10$	74	hexagon flange nuts M5
19	adjusting button	75	protecting cover of the slicing knife $\phi 208.5$
20	cover of the branch base	76	slicing knife $\phi 250$
21	hexagon socket cap screws M6×20	77	main axle of the slicing knife
22	adjusting screw of the protruding wheel	78	belt pulley of razor blade
23	nut M10	79	poly V-belt 370
24	axle of the sliding part $\phi 12 \times 90$	80	ball bearing 6004-2RS
25	adjusting branch base	81	hole elastic $\phi 42$
26	adjusting sliding board	82	axle elastic $\phi 20$
27	copper set screws M6×18	83	handle of the grinding wheel
28	copper set 1215	84	spring(innerdiameter $\phi 6.5 \times 0.6 \times 20$ )
29	compression spring	85	copper set of the grinding wheel base $\phi 12$
30	guiding axle of the sliding part $\phi 14 \times 371$	86	wheel shaft B of $\phi 10 \times 73$
31	copper set 1412	87	grinding wheel $\phi 40$
32	sliding part	88	nut M4
33	axle of bearing $\phi 10$	89	wheel shaft B of $\phi 10 \times 68.5$
34	ball bearing 6000Z	90	axle of the frame of the grinding parts $\phi 12$
35	axle elastic $\phi 10$	91	nut M5
36	hexagon socket set screws with cup point M4×6	92	protecting cover of the grinding wheel
37	hexagon socket set screws with flat point M10×35	93	hexagon socket cap screws M5×16
38	square shaft	94	plain washers $\phi 5$
39	hexagon socket cap screws M6×25	95	pan head screws with cross recessed M5×30
40	bearing 625Z	96	grinding wheel base
41	center-deviating axle of bearing M8×24	97	axle elastic $\phi 5$
42	frame of the foot carrier	98	pan head screws with cross recessed M5×10
43	handle of the frame	99	external teeth serrated lock washers M6
44	plastic feet	100	frame of the grinding parts
45	plain washers $\phi 8$	101	hexagonal screw M8×25
46	hexagon socket cap screws M8×25	102	fixing handle of the frame of the grinding parts
47	small frame B	103	pan head screws with cross recessed M5×25
48	O-shape rubber band M10-A	104	adjusting handle of the frame of the grinding parts
49	guiding stick of the food pressing board $\phi 10 \times 180$	105	wing nuts M8
50	small frame A	106	protecting plastic set
51	cross recessed countersunk head screw M6×16	107	hexagonal screw M6×50
52	food carrier 195×192	108	motor 240W
53	protecting cover of the food carrier	109	electric capacitor 7 $\mu$ F
54	slotted countersunk head screws M6×25	110	hexagon socket cap screws M6×25
55	hexagonal screw M6×30	111	connecting cushion of the motor
56	food pressing board		

# MS-300



## MS-300

No.	Part Name	No.
-----	-----------	-----

1	whole frame	57	O-shape rubber band M14-A
2	food stopping board	58	guiding stick of the food pressing board $\phi 10 \times 285$
3	board base	59	frame B
4	plain washers $\phi 8$	60	relays JQX-13F
5	spring washers $\phi 8$	61	plain washers $\phi 4$
6	hexagonal screw M8 $\times$ 30	62	pan head screws with cross recessed M4 $\times$ 10
7	cover of the branch base	63	fixing clamp of the wire
8	plastic baseboard	64	wire and plug
9	switch	65	wiring terminal
10	axle set of the adjusting button	66	special screw M5 $\times$ 30
11	hexagon socket set screws with cup point M5 $\times$ 8	67	hexagon flange nuts M5
12	raised wheel	68	protect knife dish copper nut M6
13	vex-shape elastic cushion $\phi 12$	69	cross recessed countersunk head screw M6 $\times$ 16
14	adjusting button	70	protecting cover of the slicing knife $\phi 258$
15	adjusting sliding board	71	slicing knife $\phi 300$
16	hexagon socket set screws with cup point M8 $\times$ 30	72	protecting ring of the slicing knife
17	axle of the sliding part $\phi 14 \times 146$	73	main axle of the slicing knife
18	adjusting sliding part	74	belt pulley of razor blade
19	hexagon socket cap screws M6 $\times$ 25	75	poly V-belt 440
20	adjusting screw of the protruding wheel	76	ball bearing 6004-2RS
21	nut M10	77	hole elastic $\phi 42$
22	copper set 1412	78	axle elastic $\phi 20$
23	nut M6	79	handle of the grinding wheel
24	copper pan head screws with cross recessed M6 $\times$ 25	80	spring(innerdiameter $\phi 6.5 \times 0.6 \times 20$ )
25	hexagon socket cap screws M6 $\times$ 35	81	copper set of the grinding wheel base $\phi 12$
26	O-shape rubber band M20-A	82	wheel shaft B of $\phi 10 \times 74$
27	guiding axle of the sliding part $\phi 20 \times 441$	83	grinding wheel $\phi 40$
28	copper set 2025	84	plain washers $\phi 5$
29	sliding part	85	wheel shaft B of $\phi 10 \times 68.5$
30	bearing sleeve of $\phi 10 \times 6$	86	protecting cover of the grinding wheel
31	ball bearing 6000Z	87	hexagon socket cap screws M5 $\times$ 16
32	axle elastic $\phi 10$	88	grinding wheel base
33	axle of bearing $\phi 10$	89	axle elastic $\phi 5$
34	spring	90	pan head screws with cross recessed M5 $\times$ 10
35	hexagon socket cap screws M8 $\times$ 25	91	external teeth serrated lock washers M6
36	square shaft	92	nut M5
37	hexagon socket set screws with flat point M10 $\times$ 35	93	axle of the frame of the grinding parts $\phi 12$
38	bearing 625Z	94	frame of the grinding parts
39	center-deviating axle of bearing M8 $\times$ 24	95	pan head screws with cross recessed M5 $\times$ 25
40	plastic feet	96	fixing handle of the frame of the grinding parts
41	plain washers $\phi 10$	97	adjusting handle of the frame of the grinding parts
42	hexagon socket cap screws M10 $\times$ 40	98	wing nuts M8
43	frame of the foot carrier	99	protecting plastic set
44	cap nut M10	100	electric capacitor 10 $\mu$ F
45	handle	101	connecting cushion of the motor
46	stainless steel nail of $\phi 3 \times 13$	102	motor 270W
47	food pressing board	103	belt pulley of the blade motor $\phi 22$
48	Nylon rod	104	cross recessed countersunk head screw M5 $\times$ 10

49	hexagon socket set screws with cup point M10×20	105	hexagonal screw M6×50
50	copper set 1015	106	fixing screw of the protecting cover of the slicing knife o
51	food carrier 230×300	107	scrapping meat plate
52	spring washers φ6	108	pan head screws with cross recessed M6×10
53	plain washers φ6	109	copper pan head screws with cross recessed M5×16
54	hexagon socket set screws with cup point M6×30	110	copper nut M5
55	slotted countersunk head screw M6×25	111	equipotential sign
56	small frame A		